



# VeriKine™ Mouse Interferon Beta ELISA Kit

## Certificate of Analysis & Protocol

Assay Range: 15.6 - 1000 pg/ml  
Compatibility: Serum, Tissue Culture Media  
Assay Length: 3 hr 15 min

Catalog No: 42400-1

Lot No: 7710

Expiration: August 31, 2025

Store all components at 2-8°C

Kit Components	Part No.	Lot No.	Quantity
Plate(s)	SMP028	K7523	1
Plate Sealers	N/A	N/A	4
Wash Solution Concentrate	SMP022-60	K7289	50 ml
Mouse IFN-Beta Standard, 500,000 pg/ml	SMP210-1	K7526	1 vial
Dilution Buffer	SMP021-30	K7038	30 ml
Antibody Concentrate	SMP211-1	K7527	1 vial
HRP Conjugate Concentrate	SMP179-240	K7528	1 vial
Concentrate Diluent	SMP024-30	K7390	30 ml
TMB Substrate Solution	KET-15	220103D03	15 ml
Stop Solution	SCY-15	69099	15 ml

### Product Performance Specifications

Intra-Assay CV	≤ 8%
Inter-Assay CV	≤ 8%

### Authorization

Released by: \_\_\_\_\_

Date: August 14, 2024

Visit PBL's website  
<https://pblassaysci.com/documentation>  
 for additional information including  
 technical data sheet

**CAUTION:** Wash Solution Concentrate, Dilution Buffer and Concentrate Diluent contain 0.1% Kathon CG/ICP as a preservative and should be handled with appropriate safety precautions and discarded properly. For further information, consult the safety data sheet (SDS).

Sold under license from Pestka Biomedical Laboratories, Inc. d/b/a PBL Assay Science. For research use only. Not for diagnostic or clinical use in, or administration to, humans. Not for resale in original or any modified form, including inclusion in a kit, for any purpose. Not for use in the preparation of any commercial product.

© 2022 Pestka Biomedical Laboratories, Inc. All rights reserved.

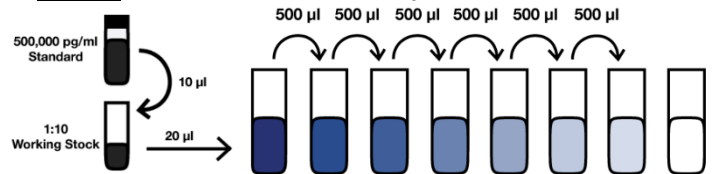
### PREPARATION OF REAGENTS

**Wash Solution:** Wash Solution Concentrate may contain crystals; place in a warm water bath and gently mix until completely dissolved. Prepare a 1:10 working wash solution (e.g. Add 50 ml Wash Solution Concentrate to 450 ml distilled or deionized water). Mix thoroughly before use.

#### Mouse IFN-Beta Standard Curve Preparation:

- Label seven polypropylene tubes (S1 – S7).
- Prepare *working stock* by pipetting 10 µl Standard into 90 µl Dilution Buffer or Sample Matrix. Mix thoroughly by gently pipetting up and down 10 times.
- Add indicated volume Dilution Buffer to each tube as indicated in Figure 1.
- Using polypropylene tips, add indicated amount of *working stock* to S7. Use a pipette set at 500 µl and mix thoroughly. Remove indicated amount from S7 and add to S6. Repeat to complete series to S1.

Figure 1: 7-Point Standard Curve Prepared in Dilution Buffer



Label	S7	S6	S5	S4	S3	S2	S1	Blank
Dilution Buffer (µl)	980	500	500	500	500	500	500	500
IFN-Beta (pg/ml)	1000	500	250	125	62.5	31.3	15.6	0

**Sample Preparation:** Thaw frozen sample tubes to Room Temperature (RT) (22-25°C) in either tap water or between the fingertips. If samples require dilution, prepare using Dilution Buffer or Sample Matrix. Keep at RT until use. Measurements in duplicate are recommended.

**Antibody Solution:** 15 minutes prior to use, dilute Antibody Concentrate in volume of Concentrate Diluent shown below. Keep at RT (22-25°C).

Micro-plate Strips Used	2	4	6	8	10	12
Antibody Concentrate (µl)	40	80	120	160	200	240
Concentrate Diluent (ml)	2.0	4.0	6.0	8.0	10.0	12.0

**HRP Solution:** 15 minutes prior to use, dilute HRP Conjugate Concentrate in volume of Concentrate Diluent shown below. Keep at RT (22-25°C).

Micro-plate Strips Used	2	4	6	8	10	12
HRP Conjugate Concentrate (µl)	16	32	48	64	80	96
Concentrate Diluent (ml)	2.0	4.0	6.0	8.0	10.0	12.0

## ASSAY PROCEDURE

Bring to RT (22-25°C)	Keep at 2-8°C
Plate/Sealers	Mouse IFN-Beta Standard
Dilution Buffer	Antibody Concentrate
Matrices/Samples	HRP Conjugate Concentrate
Concentrate Diluent	
TMB Substrate	
Stop Solution	

- **Incubations:** Use plate sealers to cover the plate when directed. All incubations should be conducted in a closed chamber at 22-25°C or at RT, keeping the plate away from drafts.
- **Plate Washing:** All wells should be filled with a minimum of 250 µl of Wash Solution. Remove plate contents by inverting and blotting the plate on lint-free absorbent paper; tap the plate dry.

1. Determine the number of microplate strips required. We recommend running both the standard and samples at least in duplicate. Remove extra microtiter strips from the frame, seal in the foil bag provided and store at 2-8°C. Unused strips can be used in later assays.

Add **100 µl** of **Standard, Sample or Blank** (Dilution Buffer or appropriate dilution matrix) to each designated well.

Cover with Plate Sealer and incubate at RT for 1 hour.

After 1 hour, empty plate contents and wash wells three times.

2. Add **100 µl** of diluted **Antibody Solution** to each well.

Cover with Plate Sealer and incubate at RT for 1 hour.

After 1 hour, empty plate contents and wash wells three times.

3. Add **100 µl** of **HRP Solution** to each well.

Cover with Plate Sealer and incubate at RT for 1 hour.

After 1 hour, empty plate contents and wash wells three times.

4. Add **100 µl** of **TMB Substrate Solution** to each well. Incubate **in the dark** at RT for 15 minutes. Do not use a Plate Sealer during the incubation.

5. After 15 minutes, **DO NOT EMPTY THE WELLS AND DO NOT WASH**. Add **100 µl** of **Stop Solution** to each well.

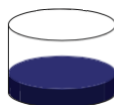
6. Using a microplate reader, determine the absorbance at 450 nm within 5 minutes after the addition of Stop Solution.

Visit PBL's website  
<https://pblsaysci.com/documentation>  
 for additional information including  
 technical data sheet

## MOUSE IFN-BETA ELISA (42400) ASSAY PROCEDURE – QUICK REFERENCE

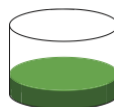
Total Time: 3 hr 15 min

**Note:** All incubations are at Room Temperature (RT) (22-25°C)\*



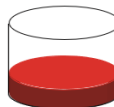
Add **100 µl** Standard, Sample, or Blank  
*Incubate 1 hr at RT\**

*Aspirate and Wash 3x*



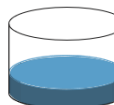
Add **100 µl** diluted Antibody Solution  
*Incubate 1 hr at RT\**

*Aspirate and Wash 3x*

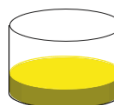


Add **100 µl** diluted HRP Solution  
*Incubate 1 hr at RT\**

*Aspirate and Wash 3x*



Add **100 µl** TMB Substrate  
*Incubate 15 min in the dark at RT\**  
*Do not seal, shake, or wash.*



Add **100 µl** Stop Solution  
*Read plate within 5 min (450 nm)*

## CALCULATION OF RESULTS

By plotting the optical densities (OD) using a 4-parameter fit for the standard curve, the interferon titer in the samples can be determined. Blank ODs may be subtracted from the standards and sample ODs to eliminate background.

**Figure 2: Typical Standard Curve**

